



DEPARTMENT OF PARKS AND RECREATION

Off-Highway Motor Vehicle Recreation Division  
1725 23<sup>rd</sup> Street, Suite 200  
Sacramento, California 95816  
Telephone: (916) 324-5801 • Fax: (916) 324-0271

Lisa Ann L. Mangat, Director

**OHMVR COMMISSION MEETING**  
**Ukiah, CA 95482**

**June 7, 2019**

**STAFF REPORT:** State and Federal Land Ownership within SVRAs

**STAFF:** Alex Stehl/Katie Mettraux, Strategic Planning and Recreation Services Division

**SUBJECT:** Status of Federal and State Land Ownership within SVRAs

---

**Summary**

The Department of Parks and Recreation (DPR) often manages land adjacent to or near federal lands managed by the United States Forest Service (USFS) and Bureau of Land Management (BLM). In some instances, state park lands are scattered within federal lands in a complex array of land ownership with different management policies. It can be very confusing to visitors when there are few visual cues on the landscape that indicate whether they are on state or federal lands. Land managers may also find it challenging to patrol and monitor lands that are interspersed over a large region. This is the case for three state vehicular recreation areas (SVRAS) – Hungry Valley SVRA, Ocotillo Wells SVRA, and Onyx Ranch SVRA. DPR, BLM, and the USFS have collaborated on a variety of approaches to provide consistent land management strategies. This staff report discusses the status of state and federal land management at these SVRAs.

**Discussion**

***Hungry Valley SVRA***

Hungry Valley SVRA manages 19,000 acres located in Los Angeles, Kern, and Ventura Counties near the communities of Gorman and Lebec adjacent to Interstate 5 at Tejon Pass. The Los Padres National Forest is adjacent to the west and the Angeles National Forest is adjacent to the south and east.

Currently, the area around the north SVRA entrance is owned by the USFS, but the SVRA operates the entrance station there through a Memorandum of Understanding (MOU). Both agencies have collaborated on proposed land exchanges to create more logical boundary lines, increase connectivity, and provide DPR with land ownership at

this north entrance. DPR manages a plot of land disconnected from the SVRA to the southwest which has been proposed as a land exchange with the USFS; however, the subject property was appraised at a much less value than the USFS lands that host the north entrance area, and the exchange was not able to proceed.

### ***Ocotillo Wells SVRA***

Ocotillo Wells SVRA is located a few miles from the western shore of the Salton Sea. It is the largest SVRA in the State Park System with 55,687 acres. The BLM El Centro Field Office manages 1.4 million acres of public lands in Imperial and San Diego Counties; approximately 21,466 acres are within Ocotillo Wells SVRA. Currently, the BLM El Centro Field Office manages resources under its jurisdiction within Ocotillo Wells SVRA under portions of two different land use plans: California Desert Conservation Area (CDCA) Plan (1980) and the Western Colorado (WECO) Desert Routes of Travel Designations (2003) (BLM WECO Plan). As part of the Desert Renewable Energy Conservation Plan (DRECP; 2015), BLM also published a Land Use Plan Amendment (LUPA) and Final Environmental Impact Statement (FEIS) in November 2015.

As part of the joint Ocotillo Wells Plan project, the agencies explored three potential approaches to manage the federal lands within the SVRA – MOU, land transfer, and lease options. Currently, DPR manages BLM lands through a MOU, most recently updated in 2008, that granted DPR surface management authority on BLM lands within Ocotillo Wells SVRA. The MOU does not preclude using public lands owned by BLM for purposes other than OHV recreation. Land transfer and lease options are available through the Recreation and Public Purposes Act that allows the Secretary of the Interior to lease or convey public lands for recreational purposes under certain conditions. BLM and DPR are currently exploring options for land conveyance under the Recreation and Public Purposes Act.

### ***Onyx Ranch SVRA***

In December 2014, DPR acquired 50 privately owned parcels (approximately 26,000 acres) in eastern Kern County. It is the second largest SVRA and is adjacent to Red Rock Canyon State Park and is interspersed mainly with BLM lands under the jurisdiction of the BLM Ridgecrest Field Office. Jawbone Canyon Off-Highway Vehicle (OHV) Area and Dove Springs OHV Area are also adjacent to the SVRA. The property is laid out in a checkerboard fashion of mostly one-mile square parcels with BLM and private lands.

DPR and BLM are working towards developing consistent land management throughout public lands in this region. This includes consistent recreation access, law enforcement, and resource protection. DPR and the BLM Ridgecrest Field Office entered into a MOU in 2015 to share law enforcement duties and engage stakeholder groups on each other's lands. DPR collaborated with BLM during the West Mojave Route Network Plan (WEMO) to ensure BLM and DPR routes were identified and their status updated.

In addition, DPR has started a Road and Trail Management Plan at Onyx Ranch SVRA to provide for trail and recreation access connectivity between BLM and SVRA lands.

**Commission Action**

For information only.

**Attachments**

Hungry Valley SVRA Map  
Onyx Ranch SVRA Map  
Ocotillo Wells SVRA Map



# State Vehicular Recreation Area Hungry Valley

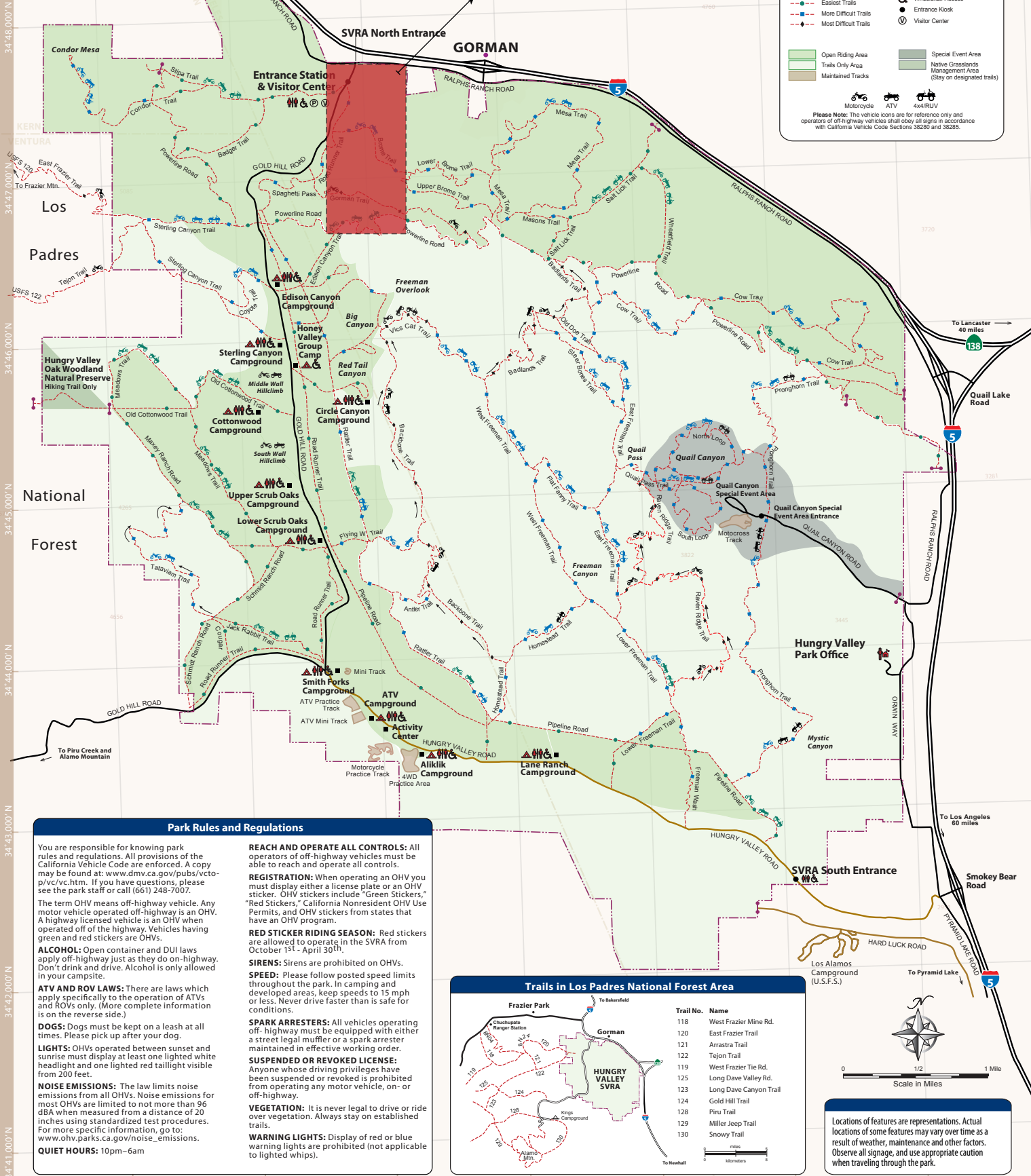
5301 Ralphs Ranch Rd., Interstate 5 • Gorman, CA 93243 • 661.248.7007

### Riding Areas and Trails

	Highway/Freeeway		Park Office
	Paved Roads		Restrooms
	Main Park Road		Camping
	Index Contour 100 feet		Locked Gates
	Contour 20 feet		Parking
	Park Boundary		Wheelchair Access
	Easiest Trails		Entrance Kiosk
	More Difficult Trails		Visitor Center
	Most Difficult Trails		Special Event Area
	Open Riding Area		Native Grasslands Management Area (Stay on designated trails)
	Trails Only Area		
	Maintained Trails		

Motorcycle    ATV    4x4/RUV

Please Note: The vehicle icons are for reference only and operators of off-highway vehicles shall obey all signs in accordance with California Vehicle Code Sections 38266 and 38265.



### Park Rules and Regulations

You are responsible for knowing park rules and regulations. All provisions of the California Vehicle Code are enforced. A copy may be found at: [www.dmv.ca.gov/pubs/vcto-p/vc/vc.htm](http://www.dmv.ca.gov/pubs/vcto-p/vc/vc.htm). If you have questions, please see the park staff or call (661) 248-7007.

The term OHV means off-highway vehicle. Any motor vehicle operated off-highway is an OHV. A highway licensed vehicle is an OHV when operated off of the highway. Vehicles having green and red stickers are OHVs.

**ALCOHOL:** Open container and DUI laws apply off-highway just as they do on-highway. Don't drink and drive. Alcohol is only allowed in your campsite.

**ATV AND ROV LAWS:** There are laws which apply specifically to the operation of ATVs and ROVs only. (More complete information is on the reverse side.)

**DOGS:** Dogs must be kept on a leash at all times. Please pick up after your dog.

**LIGHTS:** OHVs operated between sunset and sunrise must display at least one lighted white headlight and one lighted red taillight visible from 200 feet.

**NOISE EMISSIONS:** The law limits noise emissions from all OHVs. Noise emissions for most OHVs are limited to not more than 96 dBA when measured from a distance of 20 inches using standardized test procedures. For more specific information, go to: [www.ohv.parks.ca.gov/noise\\_emissions](http://www.ohv.parks.ca.gov/noise_emissions).

**QUIET HOURS:** 10pm-6am

**REACH AND OPERATE ALL CONTROLS:** All operators of off-highway vehicles must be able to reach and operate all controls.

**REGISTRATION:** When operating an OHV you must display either a license plate or an OHV sticker. OHV stickers include "Green Stickers," "Red Stickers," California Nonresident OHV Use Permits, and OHV stickers from states that have an OHV program.

**RED STICKER RIDING SEASON:** Red stickers are allowed to operate in the SVRA from October 1st - April 30th.

**SIRENS:** Sirens are prohibited on OHVs.

**SPEED:** Please follow posted speed limits throughout the park. In camping and developed areas, keep speeds to 15 mph or less. Never drive faster than is safe for conditions.

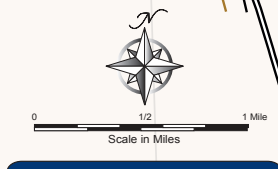
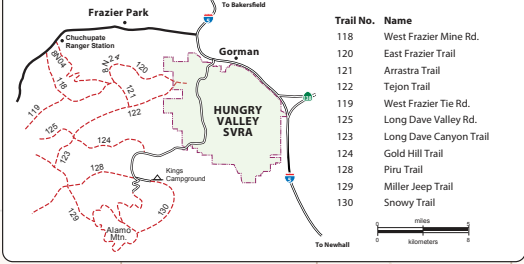
**SPARK ARRESTERS:** All vehicles operating off-highway must be equipped with either a street legal muffler or a spark arrester maintained in effective working order.

**SUSPENDED OR REVOKED LICENSE:** Anyone whose driving privileges have been suspended or revoked is prohibited from operating any motor vehicle, on- or off-highway.

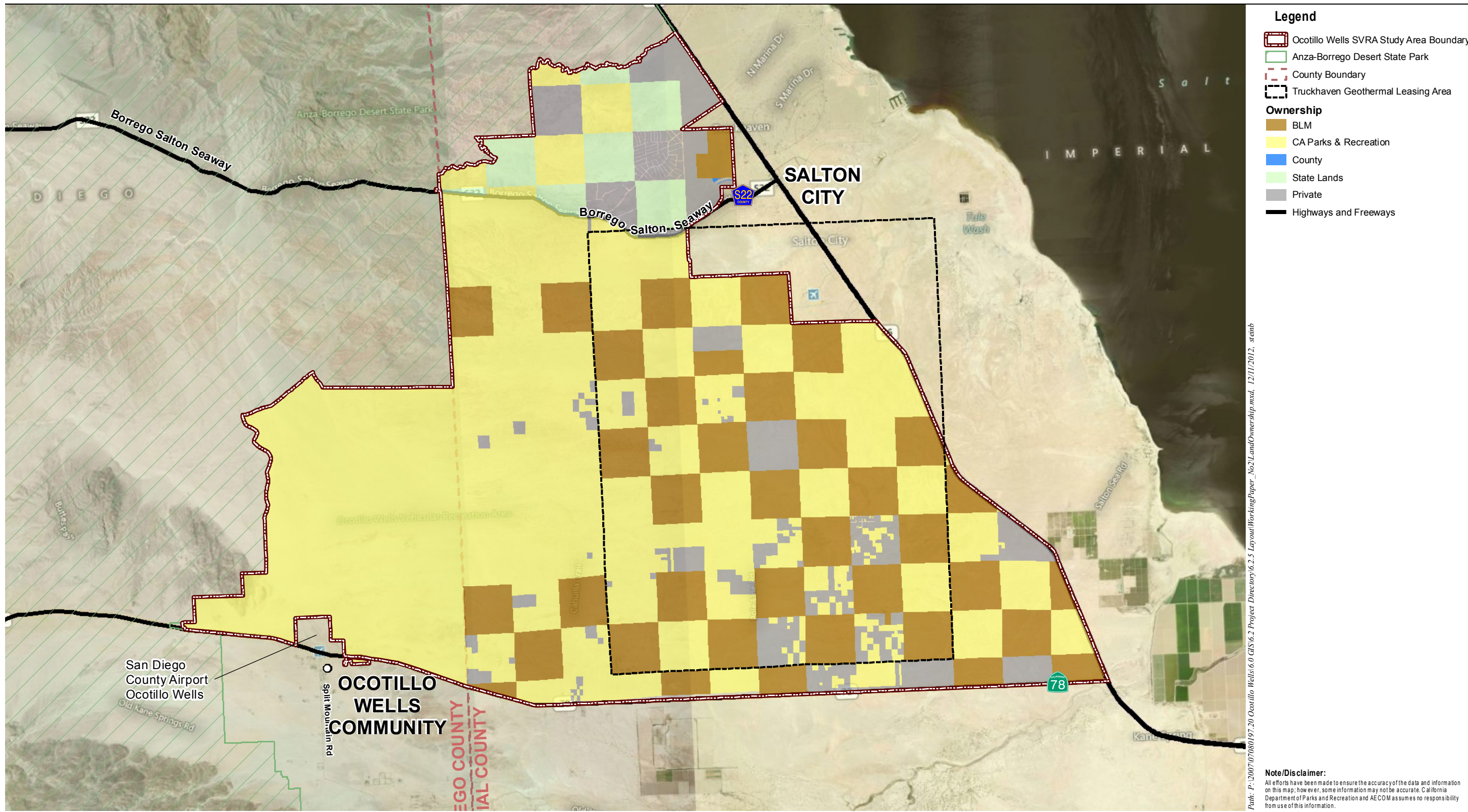
**VEGETATION:** It is never legal to drive or ride over vegetation. Always stay on established trails.

**WARNING LIGHTS:** Display of red or blue warning lights are prohibited (not applicable to lighted whips).

### Trails in Los Padres National Forest Area



Locations of features are representations. Actual locations of some features may vary over time as a result of weather, maintenance and other factors. Observe all signage, and use appropriate caution when traveling through the park.



Source: California Department of Parks and Recreation 2009, 2010; SanGIS 2010; Imperial County 2009; ESRI 2009

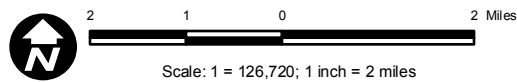
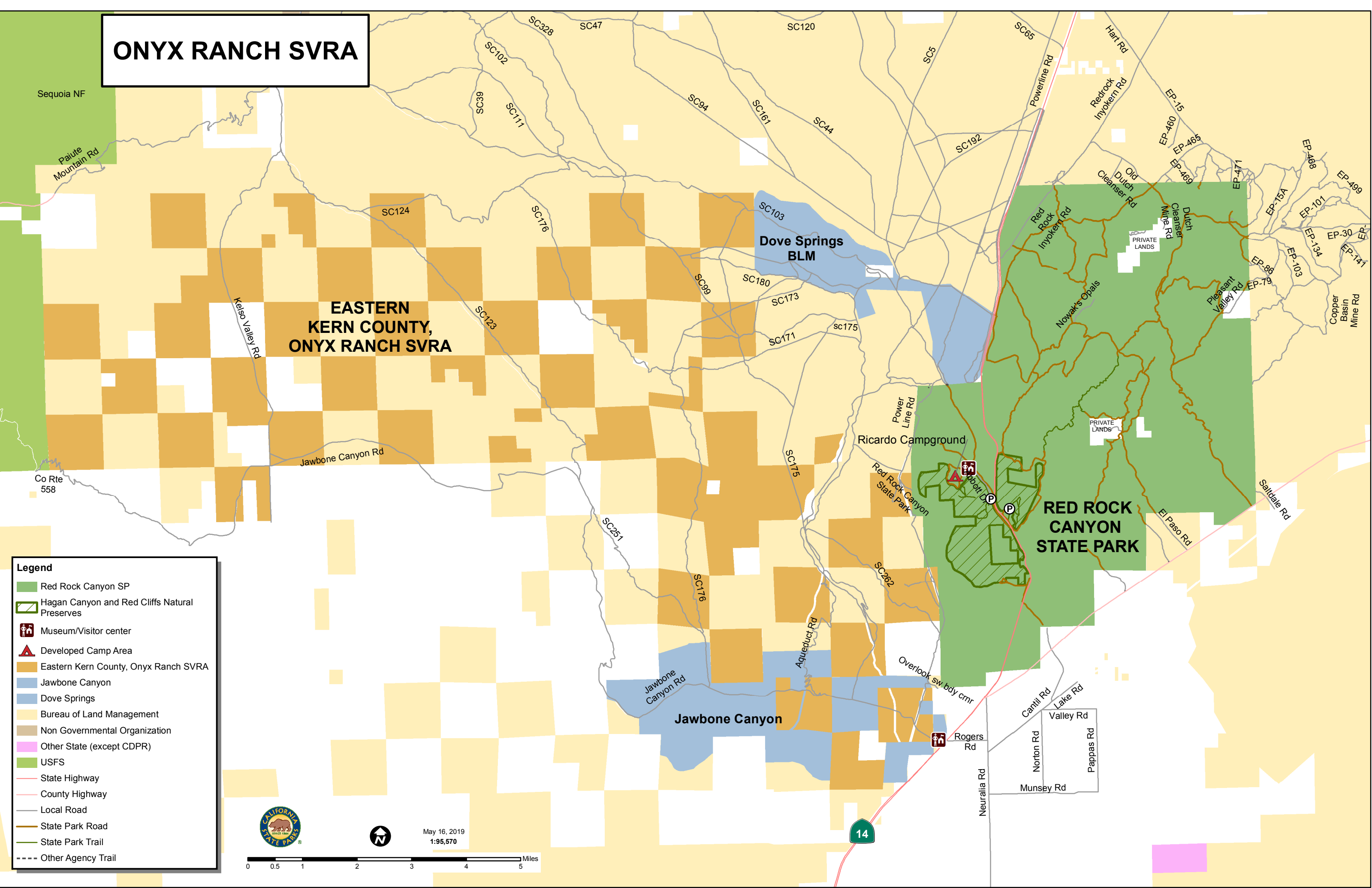


Figure 5

Land Ownership

# ONYX RANCH SVRA



**EASTERN  
KERN COUNTY,  
ONYX RANCH SVRA**

**Dove Springs  
BLM**

**RED ROCK  
CANYON  
STATE PARK**

**Jawbone Canyon**

**Legend**

- Red Rock Canyon SP
- Hagan Canyon and Red Cliffs Natural Preserves
- Museum/Visitor center
- Developed Camp Area
- Eastern Kern County, Onyx Ranch SVRA
- Jawbone Canyon
- Dove Springs
- Bureau of Land Management
- Non Governmental Organization
- Other State (except CDPR)
- USFS
- State Highway
- County Highway
- Local Road
- State Park Road
- State Park Trail
- Other Agency Trail

May 16, 2019  
1:95,570

